

# Loomis Basin Horsemen's Association

P.O. Box 2326 Loomis CA 95650

Volume 30 Issue 10

OCTOBER 2014

## Newsletter

### Highlights:

- *Traylor Ranch*  
Pg 2
- *Membership & Ad Fees*  
Pg 3
- *Caples Equestrian Trailhead*  
Pg 4,5,6,7
- *Horse Properties For Sale*  
Pg 8, 9
- *HS Sponsorship*  
Pg 11
- *Membership Forms*  
Pg 12
- *Next Meeting*  
Pg 13

### PRESIDENTS MESSAGE by Denise Howell

*Howdy Pardners!*

With summer over and kids back in school, we will resume our monthly meetings. We took a brief vacation from them but we need you now to get back to the meetings to plan our upcoming year. We'll start by discussing pros and cons of the horse show changes and possibly changing things even more. We need your feedback. In November we'll hold nominations for officers of which we need volunteers that are willing and able to bring energy and ideas to our "Round Table."

Our meetings are a great way to get out on a Wednesday evening and have pizza and meet new horse people.

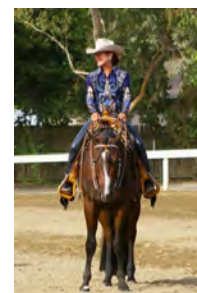
Your voice is important to us. We'd like to hear what you have to say. Do you have a topic you'd like discussed? An expert you'd like to visit? A story to share?

I hope everyone had a safe and happy summer and are looking forward to a little rain.

*Tally Whoa*



*Denise Howell  
Latte, Beethoven & Jones*



Email to LBHA has been changed!  
[LBHA@garlic.com](mailto:LBHA@garlic.com)

**SUPPORTING LBHA HELPS SAVE AND MAINTAIN OUR TRAILS, THE ARENA AT THE PARK , TRAYLOR RANCH AND THE RURAL LIFESTYLE**

## 2014 OFFICERS AND BOARD MEMBERS

### COMMITTEE HEADS

<b>PRESIDENT:</b>	Denise Howell	916-207-2543
<b>VICE PRES:</b>	Maureen Henderson	916-663-9362
<b>TREASURER:</b>	Donna Kelly	916-956-6248
<b>SECRETARY:</b>	Nancy Steuck	916-645-9659

### BOARD OF DIRECTORS

Dave Faoro	916-663-3437
Bob Sydnor	916-335-1441
Janis Rau	916-652-0894
Kathy Dombrowski	916-652-5204
Debbie Murphy	916-719-6265

### COMMITTEE HEADS

Trail Info.	Robert Sydnor	916 335-1441
Trail Maint.	Open	
Historian	Donna Kelly	916 956-6248
Publicity-	Open	
Horseshow	Janis Rau	916-652-0894
Traylor Ranch NR	Dave Faoro	916-663-3437
County Liaison-Trails	Debbie Murphy	916-719-6265
Newsletter	Denise Howell	916-207-2543
Arena	Kathy Dombrowski	916 652-5204
Membership	Kathy Dombrowski	916 652-5204

### PLACER COUNTY PARKS ADMINISTRATOR

John Ramirez 530 889-6807

### PLACER COUNTY AG COMMISSIONER

Joshua Huntsinger 530 889-7326

### CALIFORNIA STATE PARKS – Gold Fields District

Scott Nakagi 916 988-0205 ext 226  
 Brian Moses (trails) 916 240-7198  
 State Parks Dispatch 916 358-1300  
 (Call above number for incidents in State Parks)

*Lots of people talk to animals.... Not very many listen, though.... That's the problem.*

*~Benjamin Hoff, The Tao of Pooh*



### TRAYLOR RANCH NATURE RESERVE

**Our final workday of the year was completed on Saturday Sept. 27. We had a good turnout.**

All the trails and picnic areas were mowed and fine tuned. Along with weedwacking the edges and pruning. The park is all set for the winter season to move in. Let's hope for RAIN!!

I was out of the country on business and so I'd like to thank Linda and Jerry Potter for stepping in and covering.

I was also very happy to hear we had two neighbor families to TRNR who joined for the first time and looking to carry on and help next year. A BIG welcome and thanks to Jill Higgens and her husband Nicola Pusteria and their two small children as well as Lea and Bryan Wattier with their infant son for coming out to help. We'll be looking forward to having you join us next year when our workdays start up again.

In addition, we had Clelia Jocoy working the tractor and also helping out on the weedwacking we had Maureen Henderson and Dale Sloss another neighbor who has been helping all year. I apologize if I missed anyone.

I would like to send out a big thank you to all the volunteers who have come out this year in support of Traylor Ranch. It is a special place and is that way due to your hard work.

If anyone has any questions about TRNR please drop me a note.

*Dave Faoro*

**TRNR Committee Chairman,  
[dave\\_lbha@faoro.us](mailto:dave_lbha@faoro.us)**



**MEMBERSHIP**

Please renew your membership. The list of those that need to renew for can be found on our website. Click on the "Large" membership button on the Main LBHA page to see the paid up members and the Dec13/Jun 14 need to renew list. Please renew, we need YOU!

**Please Renew Today!**

If you are not getting e-mails from LBHA, we may not have the correct e-mail or you are blocking LBHA. The Newsletter goes on line the first week of each month, so if you do not get a notice, just check the webpage and then get the correct e-mail to LBHA.

Being an LBHA Member is a great way to give back to our community. We thank you in advance. Thank you.

**March Performance Horses**  
Riding Instruction and Training



**Samantha March**

1270 Fowler Rd.  
Newcastle, CA 95658

916.825.5427  
smarch05@msn.com

**AD FEES For LBHA Members**  
(Non-Members add \$10 to below fees)

**NEWSLETTER ADS** Deadline is the 25<sup>th</sup> of the month  
 ½ page: 1year \$60 Includes Business card on Website.  
 ½ page: 6mos \$30  
 Business Card Ad per issue: \$10 / issue  
 Business Card Ad/year: \$40/year includes card on Website

**DIRECTORY ADS** Deadline for Directory ads is March 1  
 Full Page Ad: \$25  
 ½ Page Ad: \$15  
 Business Card Ad: \$10 - Free for **LBHA Business Members**

**WEB ADS**  
 Business Card Ad – one year Members \$40  
 Classified Ads- Free to Members

**NOTE add \$10 to fee for Non-LBHA members**



**SCOTT'S CORNER**  
**HAY & FEED & TACK**

Keely Paregian — Proprietor  
(916) 663-4124

2001 Rattlesnake Road Newcastle, CA 95658  
www.scottscornerhay.com scottscornerhay@gmail.com

*For animals large and small.*



**"The Howell Team"**

**Dean Howell** 916-599.9338  
dean.howell@cbtnorcal.com  
CalBRE# 00982650

**Denise Howell** 916.207.2543  
denise.howell@cbtnorcal.com  
CalBRE# 01110357

[www.deananddenisehowell.com](http://www.deananddenisehowell.com)



500 Auburn Folsom Rd. #300  
Auburn, CA 95603



## Letter from our Trails Liaison:

On Sept. 10th, a small group of 8 multi-users (equestrian, mt. bike, runners) convened at Twin Rocks and Boulder Rd to walk (2 hours) the multi-use trail with Greg Wells, State Parks. Part of the Trails Management Plan calls for redesigning certain trails to improve erosion and drainage issues, safety concerns and speed of certain users.

The section of concern at this meeting was the multi-use "Center Trail" that ends at Beeks Bight which is a contentious four trail convergence (one being Pioneer Express Trail).

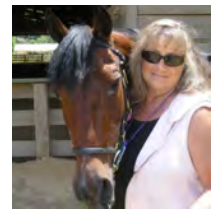
The changes to the Center Trail will reduce speed of mt. bikes, improve line of sight for all users, use the existing land contours to the advantage of Mother Nature for natural, non-erosive drainage. The sections being rerouted (12) will be left to regrow. The Beeks Bight four trail intersection will be eliminated providing safer travel for equestrians/ pedestrians on Pioneer Express as it moves the multi-use trail to the west of this intersection.

This redesign is a positive move by State Parks to address well known issues in this area. At a later date (October), I'll be meeting again with Greg Wells to assess/eliminate the Pioneer Express numerous spur trails in and around Granite Bay.

Should you have questions/ comments, you may direct them to me at: [equuspassage@ aol.com](mailto:equuspassage@aol.com)

Regards,  
Debbie Murphy  
LBHA County/ Trails liaison.

**LBHA was proud to make a donation to this project!**



## Caples Equestrian Trailhead

### *Silver Fork area,*

## Eldorado National Forest

by Robert H. Sydnor, geologist

October 2014

### Introduction

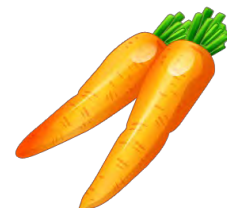
Caples Equestrian Trailhead was cleared, graded, and prepared in November 2013 by volunteer work by the Backcountry Horsemen of California, Mother Lode Unit; and the Elegant Ears Mule Association, under written permit from the Eldorado National Forest. Much of the earthwork was performed by Douglas Veerkamp, with costs of gravel paid by volunteers and equestrian donors.

The hiker trailhead at Caples Creek Trailhead does not have sufficient space for parking of horse-trailers, so it was decided to construct an entirely separate trailhead just for horses and mules.

Historically, the Caples Equestrian Trailhead was originally a log-loading zone for timber companies in the 1950s through the 1970s.

The Caples Equestrian Trailhead is *not* a camp-

ground because currently there is no outhouse and no water-supply. (We are working on this.) It is simply a trailhead whereby horse-trailers can be parked for multi-days while riders are headed into the high-country of the Sierras. The Caples Creek Trail connects to the Pacific Crest Trail, the historic Pony Express Trail, Schneider's Cow Camp, Sayles Canyon Equestrian Camp, trails in the Silver Lake area, and trails in the Kirkwood area near Carson Pass.





From Kyburz on Highway 50, turn south onto Silver Fork Road. It is paved and full width. Follow this for about ten miles, past China Flat Campground, and Silver Fork Campground.

Proceed 0.3-mile past the bridge across Silver Fork, then follow the road sign (shown at upper left on this page) to Caples Equestrian Trailhead. There are 15 graveled sites to choose from.

There are no reservations needed, and there is no cost to park your horse trailer at Caples Equestrian Trailhead. Bring sufficient horse-water inside your trailer.

As of October 2014, there are no improvements at the trailhead, so be self-sufficient.

**Annotated Aerial Photograph of Caples Equestrian Trailhead**

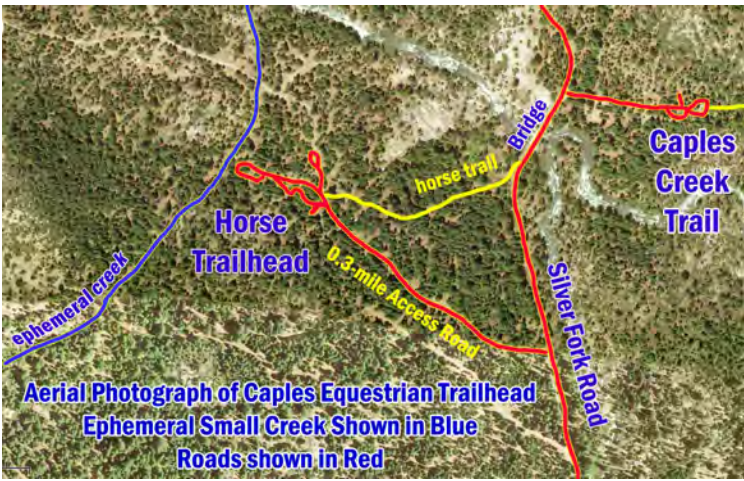
This aerial photograph was taken before the 2013 construction of the Caples Equestrian Trailhead, so not all of the newer roads and trailer-parking pads are evident.

This photo shows the geographic relationship between the horse trailhead (at left) and the hiker trailhead (at right). They are about 0.7-mile apart. A new connector horse-trail, shown in yellow, connects the two trailheads, via the 1969-era concrete Fitch Rantz Bridge across Silver Fork. North of the horse-trail and west of the bridge, notice the exposed surface of Cretaceous granodiorite bedrock that was excavated by the glacier that occupied this valley during the Pleistocene Epoch. Look closely at the bedrock structure and notice the vertical joints in the granodiorite that trend northwestward. These vertical joints form a spectacular incised gorge along the Silver Fork, as viewed northward from the deck of the Fitch Rantz Bridge.

The new connector horse-trail, about 0.3-mile in length, was constructed on October 26, 2013 by volunteer labor from Elegant Ears Mule Association, the Backcountry Horsemen of California (Mother Lode Unit), and the Eldorado 4-H Club. This short connector trail is much safer than riding horses down the paved Silver Fork Road.

There is a new toilet at the Caples Creek Trailhead, and a new bulletin board with trail maps.

A short ephemeral creek with a small hydrologic catchment area is shown on the west side of the aerial photograph. This seasonal creek is the principal focus of this hydrogeology report.



**Aerial Photograph of Caples Equestrian Trailhead**  
**Ephemeral Small Creek Shown in Blue**  
**Roads shown in Red**

## Photographs of the Caples Equestrian Trailhead with 15 parking spaces for horse-trailers



**Photographs of the new connector trail that leads across the bridge, and then to the hiker trailhead for Caples Creek.**

### **Comprehensive GoogleEarth Album of Photographs of Caples Equestrian Trailhead**

Three albums of GPS-tagged photographs have been posted onto GoogleEarth for this trailhead, and each site-photo is plotted on an aerial photograph for map reference:

For the **15 Caples Equestrian Trailhead parking** locations: 47 photos, including the driveway  
<http://www.panoramio.com/user/1521778/tags/Caples%20Equestrian%20Trailhead%3B%20Silver%20Fork%20of%20the%20American%20River>

For the 0.3-mile short **Connector Horse Trail** to the bridge across Silver Fork: 22 trail photos  
<http://www.panoramio.com/user/1521778/tags/Caples%20Connector%20Trail%3B%20Silver%20Fork%20area>

For the **Caples Creek Hikers and Mountain Bikers Trailhead with Outhouse**: 6 photographs  
<http://www.panoramio.com/user/1521778/tags/Caples%20Creek%20Trailhead%3B%20Eldorado%20National%20Forest>

## Geology of the Caples Equestrian Trailhead area

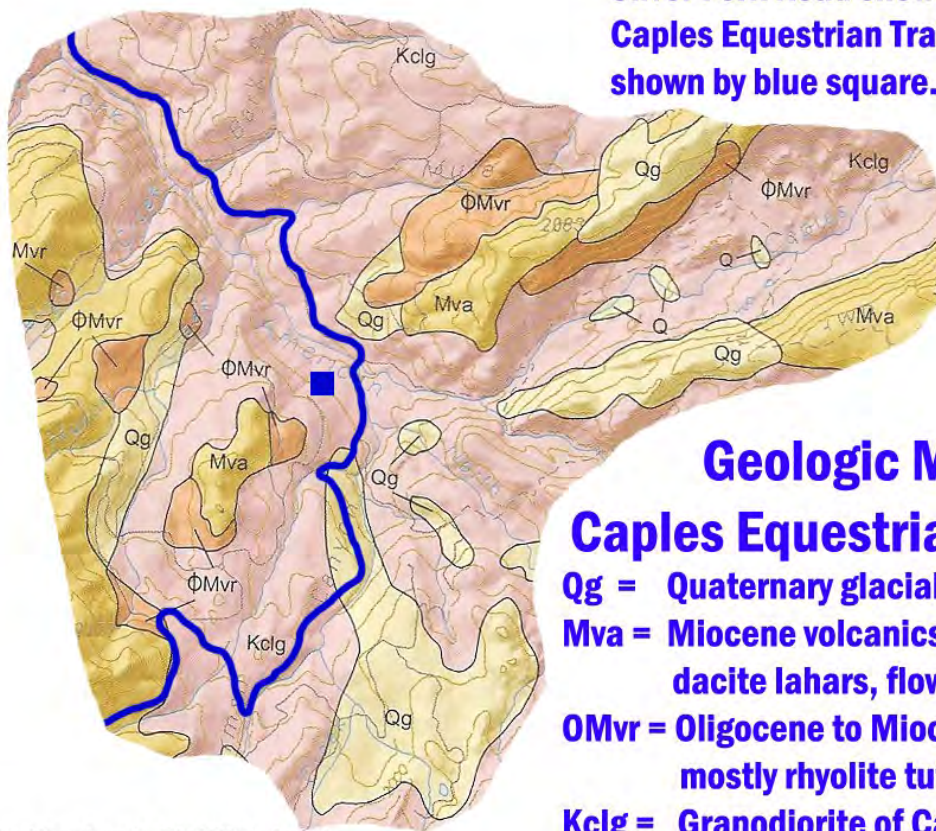
The bedrock of this area is composed of granodiorite, a gray plutonic rock of the Cretaceous Period. (Map symbol: Kclg and pink color; K = Cretaceous, cl = Caples Lake, and g = granodiorite) It is exposed in some road-cuts along Silver Fork Road. It has vertical joints that trench northwest, and therefore the NW-azimuth of Silver Fork is controlled by the structure of the bedrock.

Overlying the granitic bedrock are rhyolite tuffaceous rocks; these volcanic rocks are Oligocene to Miocene in age. Most of these relatively softer volcanic rocks were stripped away during Pleistocene glaciation. (Map symbol: ØMvr and orange color; v = volcanic rock and r = rhyolite)

Several ridges above the valley are composed of andesite and dacite lahars, flows, and breccias; these volcanic rocks are of Miocene age. (Map symbol: Mva and dark yellow color; v = volcanic rock, and a = andesite.)

During the Pleistocene Epoch, the entire Tahoe Basin and the Sierra Nevada range was glaciated by several pulses of ice, named the Tioga Glaciation and the Tahoe Glaciation. Glacial outwash deposits (map symbol: Qg) are evident down to about elevation 5,700 feet near the Silver Fork Campground, slightly lower in elevation than the Caples Equestrian Trailhead. These glacial deposits are composed of distinctive rounded boulders, plus rounded cobbles and coarse sands. Glacial deposits form a thin veneer of heterogeneous soil in the equestrian trailhead, mostly coarse sands with pebbles and cobbles. Modern sheet-flow erosion has reworked these glacial deposits to form colluvium (a hillside gravity and sheet-wash soil over 3 feet in thickness), and it is also found as alluvium along ephemeral stream channels (such as the west side of the equestrian trailhead.)

**Silver Fork Road shown in blue line.  
Caples Equestrian Trailhead  
shown by blue square.**



## Geologic Map of

## Caples Equestrian Trailhead

- Qg = Quaternary glacial deposits**
- Mva = Miocene volcanics; andesite and dacite lahars, flows, breccias**
- ØMvr = Oligocene to Miocene volcanics; mostly rhyolite tuff**
- Kclg = Granodiorite of Caples Lake; Cretaceous Period**

Extract from: Saucedo, G.J., 2005, Geologic Map of Lake Tahoe Basin: California Geological Survey, Regional Geologic Map #4, scale 1:100,000

## 8025 Rasmussen Rd, Loomis



**Awesome distant views  
End of road—privacy  
\$697,000**

Gated entry to this remodeled and updated 2009 one story with awesome distant westerly views, set up for livestock with a 40'x73' MD raised barn with 14' roll up door for hay storage, large breeding stall or office and doors open to paddocks. Many (over 20) shelters with underground irrigation to paddocks and pastures. The home is two story with all living on one level except the Family Room, laundry area and Kitchenette is on the lower level. The 20x15 Living room has a cozy gas fireplace, hardwood floors, French doors leading to large composite decks with awesome distant views. A lovely stained glass door with side lights at the covered front porch invites you to a tile entry. The approximate 30x17' Family room downstairs has a laundry area, Kitchen and many storage cabinets and closets. The main Kitchen has a dining bar, custom cherry cabinets, granite slab counter tops, stainless steel appliances, self closing drawers, tile floor, double ovens including microwave, convection, self cleaning—a flat electric range top, dishwasher, disposal, refrigerator plumbed for ice and water and a pantry cabinet. There is a formal dining area open to the Kitchen. The Master bedroom suite has a separate sitting room/office with French doors leading to the composite deck. Great views from the Master suite with lighted ceiling fan, lush carpet, large cedar lined walk-in closet and built in linen closet. The Master bath has double sinks, cherry cabinet, shower over tub, tile counters and floors, double mirrors. Guest Bath has double sinks, tile floors and counters. The second bedroom has knotty pine walls, wood flooring and mirrored closet doors. The property has well and irrigation water and a seasonal creek. There are two large storage tanks—one for well and one for irrigation water. There is underground irrigation to paddocks and pastures. Bring your livestock! Great location with easy access to I-80 freeway.



MLS# 14050309 APN:037-071-058-000 **Directions:** Auburn-Folsom Rd to King or Horseshoe Bar Rd-go 2 miles west to Val Verde-from King go S about 1/2 mile-from Horseshoe Bar go N. on Val Verde Rasmussen

**Margo Glendenning 530-886-5736 Direct Line**

**530-906-4783 cell email: [margoglendenning@cbnorcal.com](mailto:margoglendenning@cbnorcal.com)**

BRE #01125361 please check out my website: [margoglendenning.com](http://margoglendenning.com)

**COLDWELL  
BANKER**  
RESIDENTIAL BROKERAGE  
BRE# 01908304

All measurements approximate. Information deemed reliable, but not guaranteed. The information has been furnished by seller and others and has not been verified by the Broker. All interested persons should independently verify the accuracy of the information reported herein. 2013 Coldwell Banker Real Estate LLC. All rights reserved. Coldwell Banker is a registered trademark licensed to Coldwell Banker Real Estate LLC. An Equal Opportunity Company. Equal Housing Opportunity. Each Coldwell Banker Residential Brokerage Office is Owned by a Subsidiary of NRT LLC. All rights reserved. This information was supplied by Seller and/or other sources. Broker believes this information to be correct but has not verified this information and assumes no legal responsibility for its accuracy. Buyers should investigate these issues to their own satisfaction. BRE #01908304



## 6975 Cavitt Stallman, Granite Bay



Private home on 10+/- acres  
**\$750,000**  
 City, well & irrigation water



GREAT potential on 10+/- useable acres. There are 11 livestock shelters with long paddocks (some are approximately 30x250') that are irrigated and have city water to shelters. There is an orchard with 100 mandarins in the far rear of the property with a drip system for irrigation. There is city water, well water and irrigation water connected. There is an irrigation canal running through the property and a nice big pond too! The house is privately located in the center of the property with peaceful, serene views of the pond from most rooms. There are irrigated pastures, several outbuildings and a nice big 6 stall raised breezeway barn. The house has an attached 2 car garage and there's also a 3 car detached garage that could be a workshop or storage. The one story house has been updated in some areas and is 1488 square feet per public record. There are 2 bedrooms including the master bedroom with carpet and lighted ceiling fans and large vinyl windows to enjoy nature or watch the livestock in pasture. The guest bath has a large jetted tub and the master bath has a shower stall. The large Living room has 2 sliding glass doors overlooking the beautiful pond with access to the brick patio, laminate floors and a cozy fireplace insert. The formal Dining Room has views of the pond and also has access to the brick patio. The home has newer central heat and AC plus the fireplace insert, comp roof, paved driveway to the house, huge rock outcroppings, gated entry, fenced and cross-fenced with many trees providing shade.



MLS# 14047826 APN:035-060-013-000 **Directions:** Auburn-Folsom Rd to Cavitt Stallman, pass Laird to & Sierra Ponds Ln to subject on Rt-house can not be seen from road. Gated entry

**Margo Glendenning 530-886-5736 Direct Line**

**530-906-4783 cell email: margo.glendenning@cbtnorcal.com**

BRE #01125361

please check out my website: [margoglendenning.com](http://margoglendenning.com)

**COLDWELL  
BANKER**

RESIDENTIAL BROKERAGE

BRE# 01908304

All measurements approximate. Information deemed reliable, but not guaranteed. The information has been furnished by seller and others and has not been verified by the Broker. All interested persons should independently verify the accuracy of the information reported herein. 2013 Coldwell Banker Real Estate LLC. All rights reserved. Coldwell Banker is a registered trademark licensed to Coldwell Banker Real Estate LLC. An Equal Opportunity Company. Equal Housing Opportunity. Each Coldwell Banker Residential Brokerage Office is Owned by a Subsidiary of NRT LLC. All rights reserved. This information was supplied by Seller and/or other sources. Broker believes this information to be correct but has not verified this information and assumes no legal responsibility for its accuracy. Buyers should investigate these issues to their own satisfaction. BRE #01908304



**Loomis Basin  
Equine Medical Center, Inc.**

**Office Hours**  
Monday thru Saturday  
8:00am - 6pm

**Appointment Hours**  
Monday thru Saturday  
9:00am - 5pm

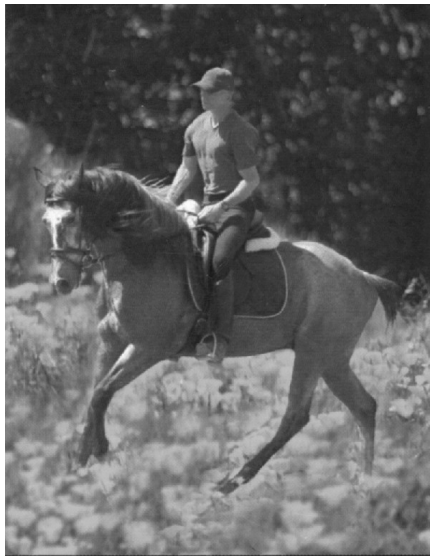
In-house & Ambulatory Emergency Services available 24 hours/7 days

**(916) 652-7645**  
2973 Penryn Road Penryn, CA 95663  
Visit us at: [lbemc.com](http://lbemc.com)

**DOCTORS**

Langdon Fielding, DVM, Dipl ACVECC  
Catherine Jacobs, DVM  
Jill Higgins, DVM  
Robert Morgan, DVM  
Diana Stolba, DVM  
Eduardo DeLaCruz, DVM  
Jennifer Mayer, VMD  
Emily Wilson, DVM  
Elizabeth Howard, DVM

Jason Errico, DVM Dipl ACVS - Surgery  
Dominic Dawson Soto, DVM Dipl ACVIM - Internal Medicine



**Martin Courtney**  
Dressage Training  
**(916) 719-5789**  
[MCDressage.Shutterfly.com](http://MCDressage.Shutterfly.com)

# Knicker Knob

## STABLE



Exp 9/1/14

**LOOMIS, CALIFORNIA**

Conveniently located near Horseshoe Bar Road and Auburn Folsom Road and within riding distance to the Folsom Lake trails. Knicker Knob has long been known in the Gold Country equestrian community for producing safe and knowledgeable horsemen.

**Boarding/Lesson special:** Boarders at Knicker Knob Stable can participate in free lessons every Friday 5:30-7pm during Daylight Savings Time. Non-boarders can trailer in for lessons for \$20 each. Lessons are taught by Terry Haney.

**Boarding** barn stalls | pipe corrals | pasture from \$305

**Amenities** 140' X 70' lighted arena | 50' round pen grass turnout | large wash rack | indoor grain room tack rooms | bathroom | refrigerator | shaded picnic area

**Riding lessons** Offered by our teaching staff with a combined experience of 60 years of teaching. Group \$25 | semi private \$30 | private \$40

Terry 916.778.8651 Kathy 916.204.0346  
[www.knickerknobstable.com](http://www.knickerknobstable.com) [Facebook.com/KnickerKnobStable](https://www.facebook.com/KnickerKnobStable)

## LBHA 2014 HS Sponsorship Form

The Loomis Basin Horsemen's Association (LBHA) is seeking sponsorships for its benefit English/Western Schooling Horse Shows to be held on October 11 & 12, 2014  
(LBHA Tax ID # 680001143)

LBHA is a non-profit organization dedicated to the development and preservation of facilities and trails in the Loomis Basin area of South Placer County for use by all horsemen. LBHA uses all profits from the benefit shows to help achieve these goals. Contributions are tax deductible and will be placed into the LBHA Arena/Trail Fund & the Traylor Ranch Fund. The following sponsorships are available:

Sponsor Type	Description	Sponsorship Cost
<i>General Sponsor</i>	Your name will appear on the show program and will be announced during the day of the show	\$10.00
<i>Class Sponsor</i>	Your name will appear on the show program as a class sponsor and will be announced individually during the class you are sponsoring as well as throughout the day of the show. ( With two class sponsors - you may put up a BANNER)	\$25
<i>Booth Exhibitor</i>	You may set up a booth at the show in a designated area. Your presence will be announced during the day. BANNER	\$30 for 1 day \$50 both days

**Sponsorship Record:**  
 Type of sponsor:    **General**     **Class**     **Booth**   
 Corporate Sponsor    **Silver (\$100-499)**     **Gold (\$500 - 999)**     **Platinum (\$1000 & up)**

**\*BUY TWO CLASS SPONSORSHIPS a BOOTH OR A CORPORATE SPONSORSHIP, AND HAVE YOUR BANNER PUT UP ON THE ARENA FOR THE SHOW**

Date \_\_\_\_\_ Check number: \_\_\_\_\_ Amount: \_\_\_\_\_

**Thank you for your generous donation**

~~Please keep this section as your receipt.~~ -----

LBHA MEMBER - YES    NO

Mail this bottom section of the sponsorship form to  
**Make checks out to LBHA**

**Loomis Basin Horsemen's Association**  
**P.O. Box 2326, Loomis CA 95650**

Name \_\_\_\_\_ Business if Applicable \_\_\_\_\_

Address \_\_\_\_\_ City/Zip/State \_\_\_\_\_

I would like to support the LBHA Benefit Horse Show As a:    Phone \_\_\_\_\_

General Sponsor     Class Sponsor     Booth Exhibitor  for Amount \$ \_\_\_\_\_  
 Corporate Sponsors    Silver (\$100-499)     Gold (\$500 - 999)     Platinum (\$1000 & up)

Product/gift certificate and value: \_\_\_\_\_

As a Class Sponsor, I would like to sponsor the class types indicated:

Halter / in hand     Equitation     Pattern class     Pleasure Class     Trail  
 Hunter/Jumper     Walk-Trot/Leadline     Any class     Specify a class \_\_\_\_\_

As a Booth Exhibitor, I will be selling/showing \_\_\_\_\_ Date \_\_\_\_\_

**NOTE: Due to space only booths representing Breed or Trail Organizations, Feed, Tack or Equestrian supplies/services will be accepted. If space is available, other booths will be considered.**

MEMBERSHIP FORM  
LOOMIS BASIN HORSEMEN'S ASSOCIATION

The Loomis Basin Horsemen's Association, founded in 1984, is a non-profit informational and awareness organization dedicated to the Arena at the Loomis Basin Community Park, Loomis Basin Trails, Traylor Ranch, and the preservation of the Rural Lifestyle

\_\_\_\_\_ INDIVIDUAL (\$15) \_\_\_\_\_ FAMILY (\$20) \_\_\_\_\_ BUSINESS (\$25)  
Please submit business card for  
Roster \_\_\_\_\_ NEW MEMBERSHIP \_\_\_\_\_ RENEWAL \_\_\_\_\_

PLEASE INDICATE COMMITTEE(S) YOU CHECK AREAS OF INTEREST  
Would Like to Serve On \_\_\_\_\_  
\_\_\_\_\_ Arena \_\_\_\_\_ Membership \_\_\_\_\_ Trail Riding \_\_\_\_\_  
\_\_\_\_\_ Trail \_\_\_\_\_ Phone \_\_\_\_\_ Western Horseshows \_\_\_\_\_  
\_\_\_\_\_ Publicity \_\_\_\_\_ County Liaison \_\_\_\_\_ English Horseshows \_\_\_\_\_  
\_\_\_\_\_ Newsletter \_\_\_\_\_ Traylor Ranch \_\_\_\_\_ Endurance \_\_\_\_\_  
\_\_\_\_\_ Horseshow \_\_\_\_\_ Anywhere \_\_\_\_\_ Dressage \_\_\_\_\_  
\_\_\_\_\_ Work Days \_\_\_\_\_ Roping/Cutting \_\_\_\_\_ Other \_\_\_\_\_

I would like to contribute \_\_\_\_\_ to the Equestrian Fund or \_\_\_\_\_ to the Traylor Ranch Fund. Contributions to either Fund are Tax Deductible and will be used for construction and maintenance of the Arena at the Loomis Basin Community Park, and for Maintenance of Basin Trails OR for Maintenance and upkeep of the Traylor Ranch Nature Reserve.

TRAILER PARKING KEYS: Keys are available to members at \$.00 and \$10 to non-LBHA members. Check here if you need a Key \_\_\_\_\_

KEY NUMBER \_\_\_\_\_ to be filled in by LBHA)

Name \_\_\_\_\_ Date \_\_\_\_\_

Business name: \_\_\_\_\_ Juniors \_\_\_\_\_

Address \_\_\_\_\_ Juniors \_\_\_\_\_

City \_\_\_\_\_ Zip \_\_\_\_\_

Phone \_\_\_\_\_ E-Mail Address \_\_\_\_\_

AMOUNT ENCLOSED for \_\_\_\_\_ Make Checks out to LBHA  
DUES, TRAIL/ARENA FUND, \_\_\_\_\_ and mail to:  
Or KEYS \_\_\_\_\_

TRAYLOR RANCH FUND \_\_\_\_\_ LBHA  
( Please make out a separate check) \_\_\_\_\_ P. O. Box 2326  
Loomis CA 95650

LOOMIS BASIN HORSEMEN'S ASSOCIATION

RELEASE AND HOLD HARMLESS AGREEMENT

The Undersigned assumes the unavoidable risks inherent in all horse-related activities, including but not limited to bodily injury and physical harm to horse, rider and spectator. The Undersigned acknowledges that horse-related activities are dangerous and that horses themselves have unpredictable temperaments which can sometimes cause injury. The Undersigned acknowledges that even the most experienced horse event sponsor, participant or horse owner cannot predict how each individual horse will react in a variety of situations and cannot guarantee my safety. THEREFORE, BY SIGNING BELOW, I KNOWINGLY ASSUME THE UNAVOIDABLE RISKS INHERENT IN ALL HORSE-RELATED ACTIVITIES, WHETHER KNOWN OR UNKNOWN, INCLUDING BUT NOT LIMITED TO BODILY INJURY AND PHYSICAL HARM TO HORSE, RIDER AND SPECTATOR, AND AGREE TO THE FOLLOWING ON BEHALF OF MYSELF AND MY SPOUSE, IF ANY:

1. I HEREBY RELEASE AND DISCHARGE LOOMIS BASIN HORSEMEN'S ASSOCIATION ("LBHA"), THE LBHA BOARD OF DIRECTORS, ALL LBHA OFFICERS AND INDIVIDUAL CLUB MEMBERS AND THEIR AGENTS, EMPLOYEES, OR REPRESENTATIVES, AS WELL AS PLACER COUNTY, (HEREINAFTER COLLECTIVELY KNOWN AS "RELEASEES") FROM ALL ACTIONS, CLAIMS OR DEMANDS I MAY NOW OR HEREAFTER HAVE FROM INJURY, DEATH OR DAMAGE RESULTING FROM MY PARTICIPATION IN ANY HORSE-RELATED ACTIVITIES SPONSORED BY LBHA, AT LOOMIS BASIN HORSEMEN'S ARENA OR AT ANY OTHER LOCATION.

2. I also EXPRESSLY WAIVE any rights I may have under California Civil Code §1542, which states: "A general release does not extend to claims which the creditor does not know or suspect to exist in his favor at the time of executing the release, which if known by him must have materially affected his settlement with the debtor."

5. I agree that I will DEFEND, INDEMNIFY AND HOLD HARMLESS Releasees against all claims, demands, and causes of action, including court costs and actual attorney's fees, arising from any proceeding or lawsuit brought against them due to any act done by me, or brought by me or for my benefit.

I HAVE READ THIS RELEASE AND WAIVER OF LIABILITY AND INDEMNITY AGREEMENT CAREFULLY AND COMPLETELY, AND FULLY UNDERSTAND ITS CONTENTS. I AM AWARE THAT THIS IS A RELEASE OF LIABILITY AND A CONTRACT BETWEEN MYSELF AND RELEASEES, AND I SIGN IT OF MY OWN FREE WILL. I FURTHER AGREE THAT NO ORAL REPRESENTATIONS, STATEMENTS OR INDUCEMENTS APART FROM THE FOREGOING WRITTEN AGREEMENT HAVE BEEN MADE, AND THAT I RELY ON NONE. THIS AGREEMENT SHALL REMAIN IN EFFECT UNTIL REVOKED IN WRITING BY ME.

Signature(s) \_\_\_\_\_

Name (s) \_\_\_\_\_ Age, if minor \_\_\_\_\_

If minor, Parent or Guardian must sign \_\_\_\_\_

Name of Parent or Guardian: \_\_\_\_\_



## Blanket Repairs R Us

We Wash and Repair Horse Blankets



We Service

Blankets — Hoods — Sheets -- Coolers — Saddle Pads — Stall Drapes

Barn Rags — And much More

Washing & Repairs

◇Heavy Wash ◇Waterproofing ◇ Anti-Fungal Washes ◇ Replace Hardware

Pickup and Delivery Available to your Home or Ranch

(fee may apply, with TEN or

more blankets NO FEE charged)

Contact: **Vonnie Bays** - Owner / manager

697 Havenwood Drive, Lincoln, CA 95648 916 645-9000 [LVBAYS@wavecable.com](mailto:LVBAYS@wavecable.com)

Exp 1/1/15

### Next Meeting.

**October 15.** Round Table Pizza Parlor. Eat at 6:30, Meet at 7:00 Horse show meeting discussion and improvements.

**November 19.** Round Table Pizza Parlor. Eat at 6:30, Meet at 7:00 Officer and Director nominations.

Exp 4/1/15

## Lazy U Ranch

Massage Therapy

**Tammy Haas**

Certified Massage Practioner  
Lic. #29837

2610 Swetzer Rd  
Loomis, CA 95650

916-947-4492



Your Business Card  
Here





**HAPPY HALLOWEEN**



*From the Loomis Basin Horsemen's Association*

**Renew your membership.**

[www.garlic.com/~lbha/NeedToRenew.pdf](http://www.garlic.com/~lbha/NeedToRenew.pdf)

**ABOUT LBHA**

The Loomis Basin Horsemen's Association founded in 1984 is a non-profit 501 (C) 3 information and awareness organization dedicated to the South Placer County Trails, Traylor Ranch, the Arena at the Loomis Basin Community Park and the Preservation of the Rural Lifestyle.

**Loomis Basin Horsemen's Association**

P.O. Box 2326  
Loomis CA 95650

E-MAIL:  
[lbha@garlic.com](mailto:lbha@garlic.com)

We're on the Web!

*See us at:*

**[www.garlic.com/~lbha](http://www.garlic.com/~lbha)**

**Get Info on**

Trails

The Arena at the Park

Meetings

Clinics

Traylor Ranch

LBHA Horseshow

